

EX-ASP TYPE AUTO-IRIS LENS SERIES

HS308EX-ASP
HS607EX-ASP
HS1208EX-ASP



1. Summary

This Aspherical High Speed Auto Iris Lens Series is equipped with adjustable metering method (average ~ peak continuously adjustable) and automatic iris closure function to protect CCD when power is cut off . This series adopts aspherical lenses and features compactness and high resolution in spite of its high speed.

2. Model Application

Application		1/2"
Model Name	Ultra Wide Angle	HS308EX-ASP
	Wide Angle	HS607EX-ASP
	Standard	HS1208EX-ASP

3. Specifications

3-1. Optical & Mechanical Specifications

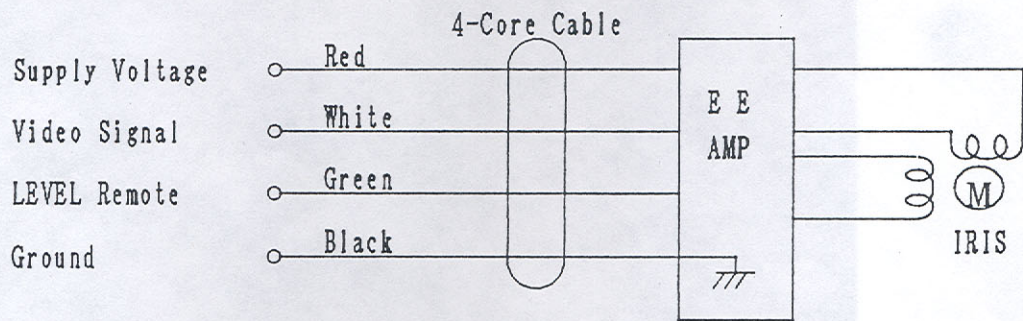
		HS308EX-ASP	HS607EX-ASP	HS1208EX-ASP
Focal Length		3.8 mm±5%	6 mm±5%	12mm±5%
Max. Aperture Ratio		1 : 0.8	1:0.75	1 : 0.8
Iris Range		F/0.8 to F/64	F/0.75 to F/64	F/0.8 to F/64
Illumination Ratio		1 : 6,400	1 : 8,300	1 : 6,400
Angle of View	Diagonal	117 ° 43'	69° 36'	38° 00'
	Horizontal	95 ° 12'	57° 12'	30° 24'
	Vertical	72 ° 00'	43° 36'	22° 36'
Picture Format		6.4 × 4.8mm		
Minimum object Distance		0.1 m	0.1 m	0.1 m
Back Focal Length		9.93mm	9.00mm	9.04mm
Flange Back Length		12.5mm±0.05		
Mount		CS-Mount (1"-32UN-2A) Position Adjustable		
Focusing Mechanism		Focusing Mechanism by Focusing Knob rotation.		
Filter Screw Size		φ43mm, P=0.75 mm		
Dimensions		As per attached drawing		
Weight		240 g	250 g	235 g
Remarks		When used with a black/white camera attach a B/W compensation filter inside mount and insert a FB compensation washer between the camera and lens to correct aberration. (refer to external drawing)		

3-2. Electrical

(1) Auto Iris

Supply Voltage & Current	DC 8 to 12V 45mA or Less
Input Signal	V or VS
Iris Accuracy	$\pm 20\%$ at V Signal Level
Sensitivity Adjustment	0.5 to 1.0Vp-p at V Signal Level
Input Impedance	High Impedance
Response Speed	1 Second (approx.)
Metering	Average to Peak Continuously Adjustable (Adjusted at AVERAGE when delivered)
Close Down	Iris closes down when the power is cut off and protects camera tube from strong light.

(2) Connection For Auto Iris



(3) Remote Control of LEVEL

Remote control of LEVEL adjustment can be done by the connection shown in the figure A.

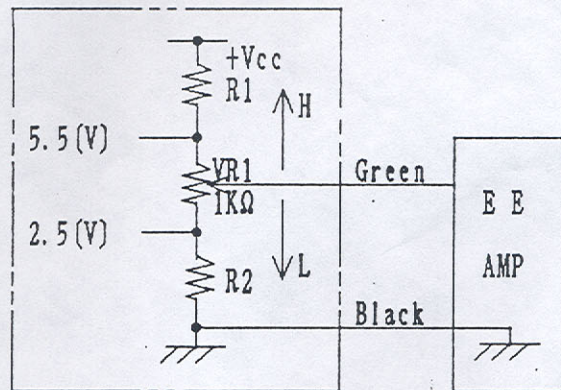


Figure A

- *1. Vcc represents supply voltage from controller.
- *2. When adjust LEVEL by remote control, LEVEL variable resistor must be set between 0.5 and 1.0Vp-p at V signal level.

3-3 Vibration & Shock Test Standard

(1) Vibration Conditions

Wave	Sine Wave
Acceleration	0.8 to 6 G
Cycle Range	20 to 50 Hz
Cycle Period	3 Minutes
Duration of Vibration	20 Minutes Respectively in Three Dimensional Directions

(2) Shock Conditions

Tester	Shock Testing Machine by Dropping
Impact Force	60 G
Duration of Shock	3.5 ms
Directions & Number of Times	1 Time Respectively in Three Dimensional Directions

3-4. Environmental Temperature Range -20 °C to +50 °C

4. Accessories

- | | |
|-----------------------------|---------|
| (1) Front Lens Cap | 1 piece |
| (2) Rear Lens Cap | 1 piece |
| (3) Packing Box | 1 piece |
| (4) B/W compensation filter | 1 piece |
| (5) FB compensation washer | 1 piece |

Description	Part Code
Compensation Filter	60621-S04
FB Adjusting Washer	60621-M022

